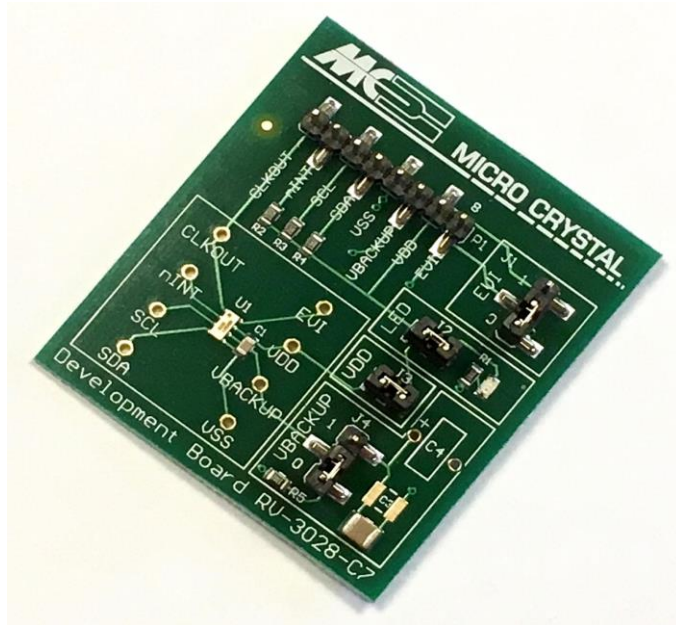


# DEVELOPMENT BOARD



# RV-3028-C7

## Extreme Low Power RTC Module

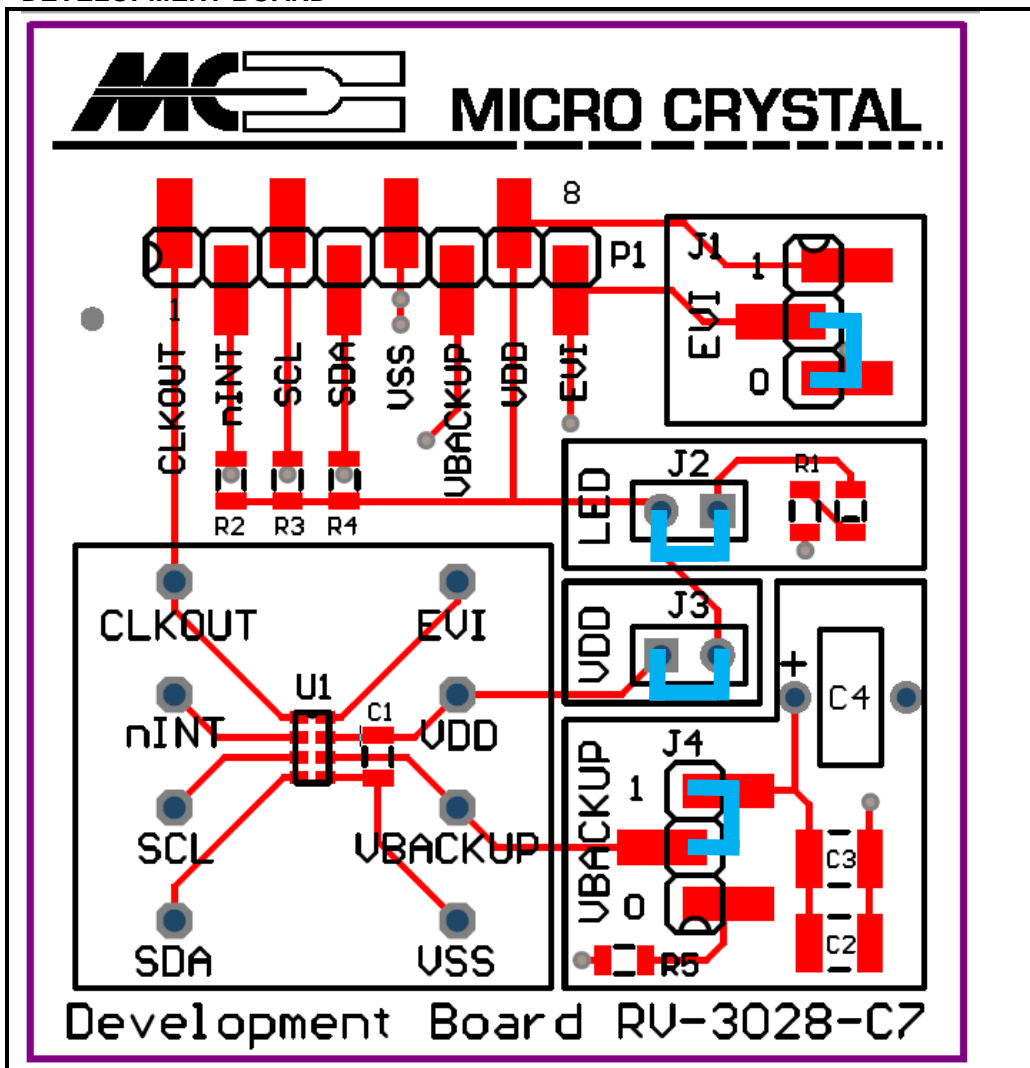
### RV-3028-C7

The RV-3028-C7 is soldered onto the Development Board.  
 Every pin is accessible at test pins 1 – 8 and at the test vias situated around the device.

The following passive components are already soldered on the board:

- C1 10 nF Decoupling capacitor between  $V_{SS}$  and  $V_{DD}$
- C2 100uF Capacitor for Back-up power
- C3, C4 Option, to place alternative capacitors or battery for back-up power
- R1 330  $\Omega$  Current limiting resistor for LED
- LED1 green Supply, current consumption of the LED has to be considered, J2 to switch off
- R2 10 k $\Omega$  Pull-up resistor INT to  $V_{DD}$
- R3 10 k $\Omega$  Pull-up resistor SCL to  $V_{DD}$
- R4 10 k $\Omega$  Pull-up resistor SDA to  $V_{DD}$
- R5 10 k $\Omega$  Pull-down resistor to define  $V_{BACKUP}$  input in case it is not used

#### DEVELOPMENT BOARD



- JUMPER 1
- EVI = HIGH
- EVI = LOW
- JUMPER 2
- LED
- JUMPER 3
- VDD, CURRENT MEASUREMENT
- JUMPER 4
- SUPERCAP
- SET INPUT TO VSS